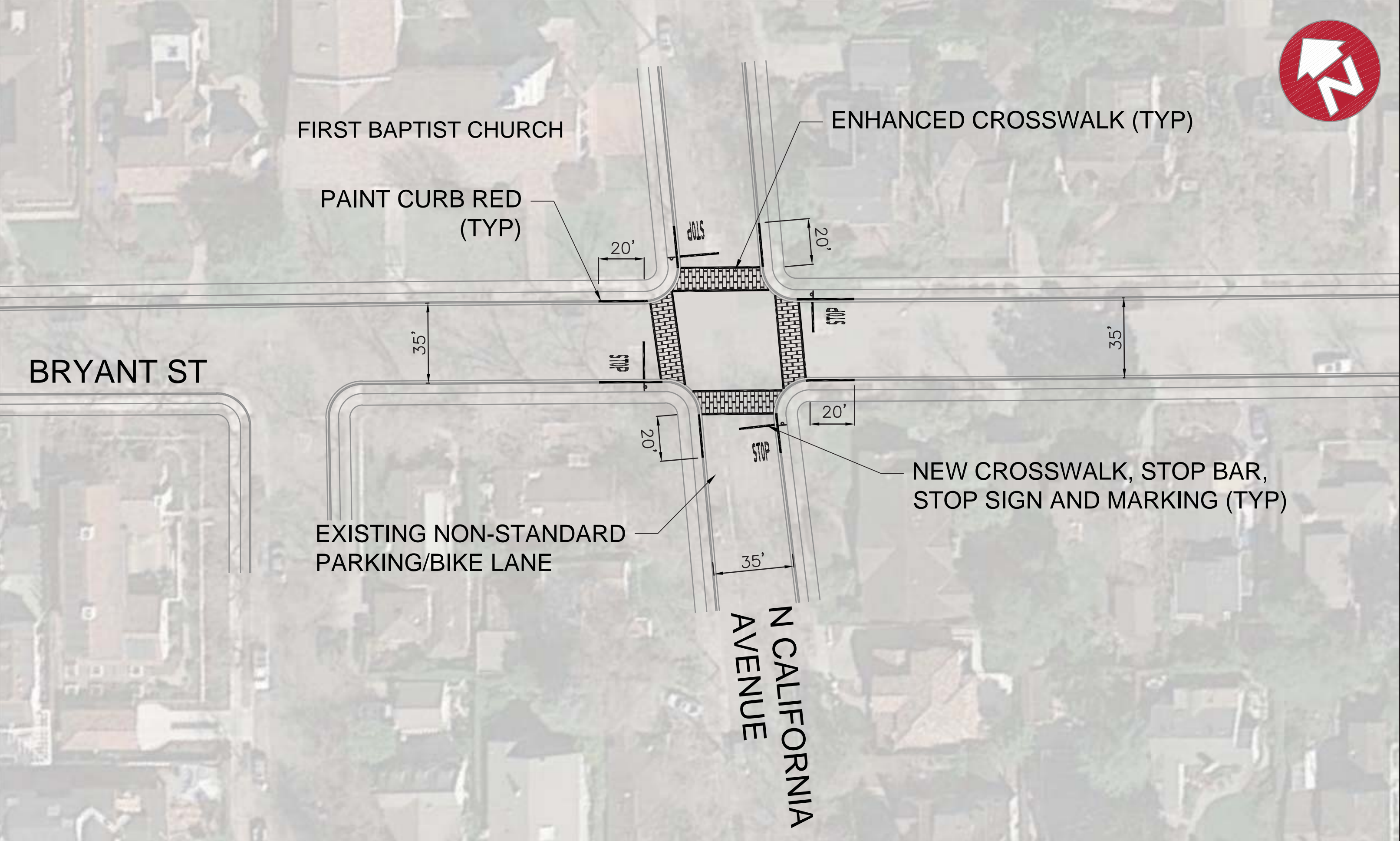


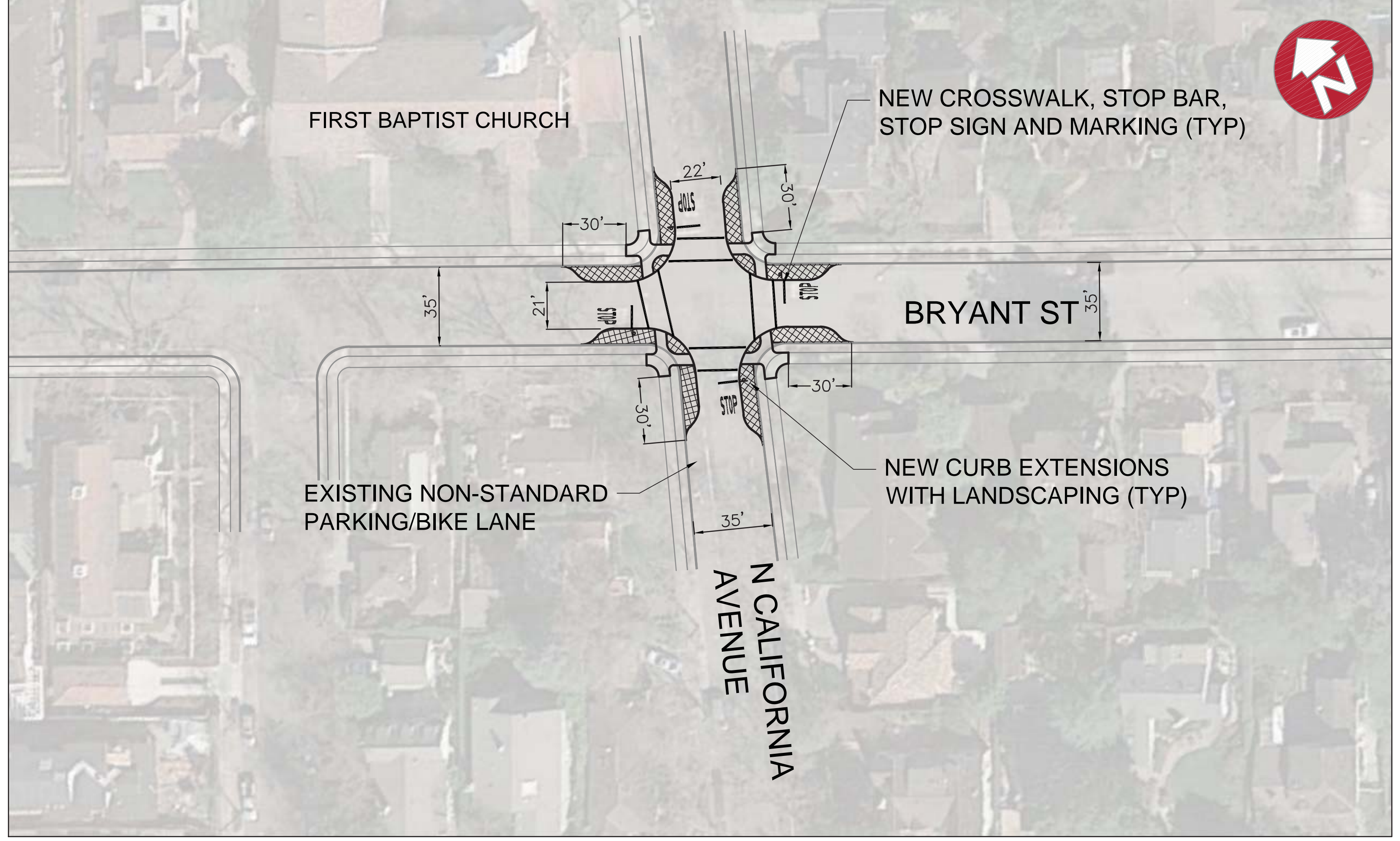
Vote for Your Favorite Intersection Option for Bryant/California



OPTION 1 - ALL WAY STOP WITH ENHANCED CROSSWALKS
PARKING SPACES LOST ≈ 8

Vote here for Option 1

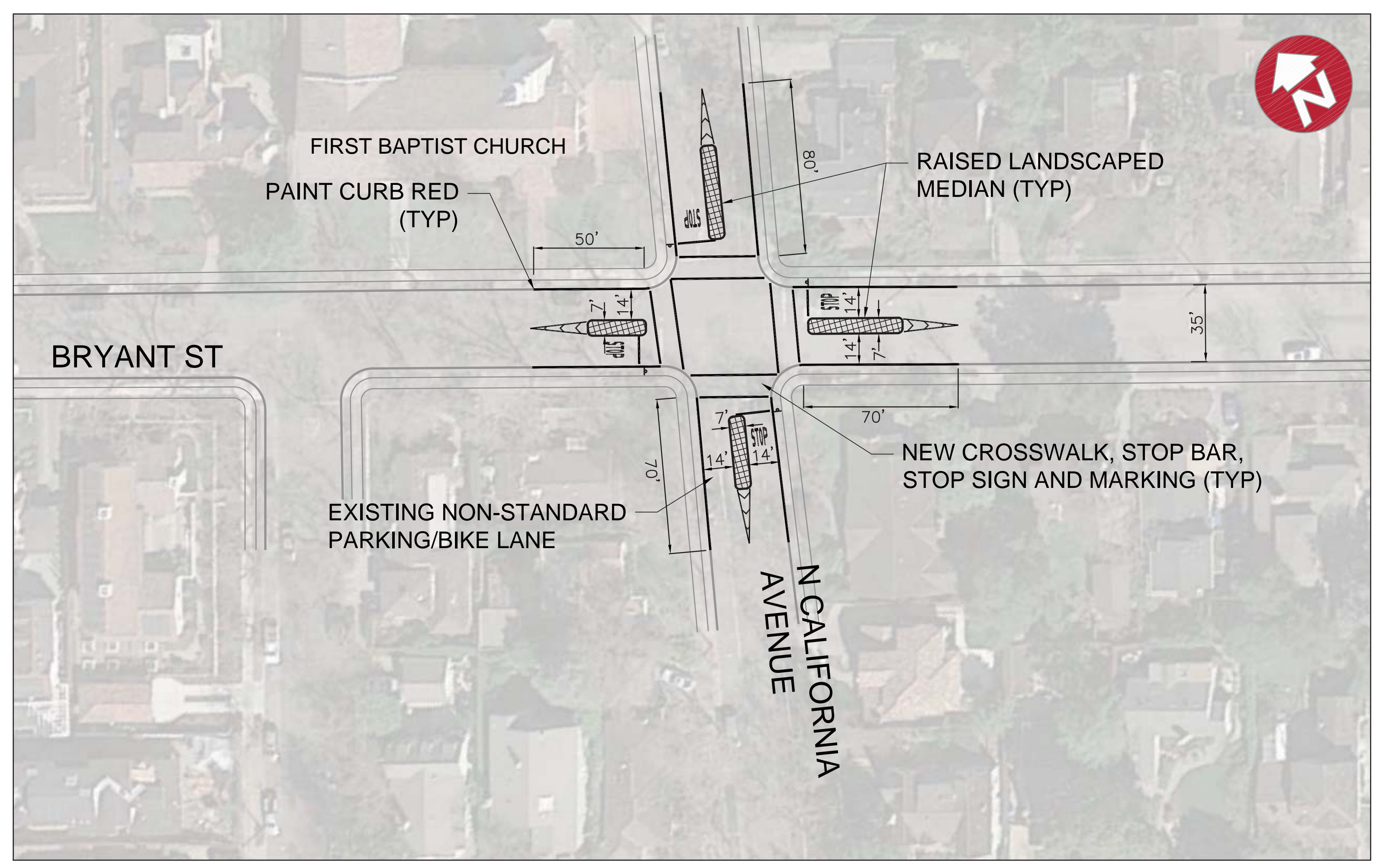
- PROS**
- Enhanced visibility while crossing
 - Minimal changes to intersection
 - Cheapest option
- CONS**
- Bicyclists must stop in all directions
 - No ability for additional landscaping/beautification
 - Least amount of parking lost
 - No additional traffic calming measures
- RELATIVE COST**
\$



OPTION 2 - ALL WAY STOP WITH CURB EXTENSIONS
PARKING SPACES LOST ≈ 8

Vote here for Option 2

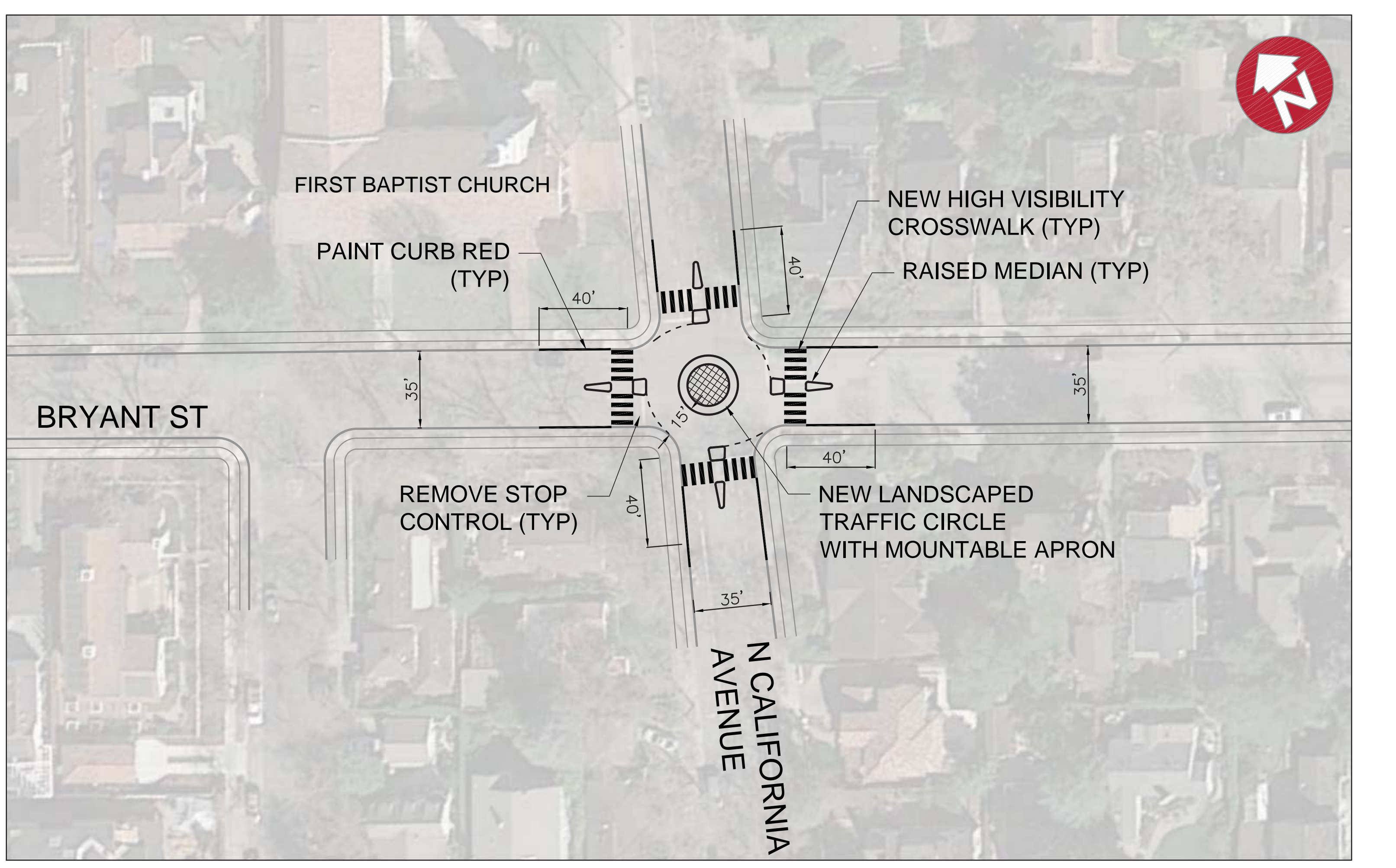
- PROS**
- Shortest crossing distance for pedestrians
 - Traffic calming and opportunities for landscaping/beautification
- CONS**
- Bicyclists must stop in all directions
 - Least amount of parking lost
 - Potential impacts to drainage
- RELATIVE COST**
\$\$\$



OPTION 3 - ALL WAY STOP WITH MEDIAN ISLANDS
PARKING SPACES LOST ≈ 22

Vote here for Option 3

- PROS**
- Traffic calming and opportunities for landscaping/beautification
 - No/minimal impacts to drainage
- CONS**
- Bicyclists must stop in all directions
 - Greater loss of parking spaces
- RELATIVE COST**
\$\$



OPTION 4 - MINI ROUNDABOUT
PARKING SPACES LOST ≈ 16

Vote here for Option 4

- PROS**
- Enhanced visibility while crossing
 - Pedestrian refuge area while crossing creates two shorter crossings
 - Yield control minimizes need for bicyclists to stop
 - Traffic calming and opportunities for landscaping/beautification
 - No/minimal impacts to drainage
 - Mountable apron allows for emergency vehicle access
- CONS**
- Moderate loss of parking
 - Potential learning curve with yield treatment
- RELATIVE COST**
\$\$